



Auckland Care
Limited



Estridge Close

Estridge is placed in a tranquil residential setting not far from River Hamble, the Royal Victoria Park and a full-service TESCO hypermarket in an area that offers a wide range of community facilities in almost all directions of the property.



Shopping facilities and various other community amenities in Park Gate, Sholing and Southampton are a brief bus or train ride away from the house.

The semi-detached property has 4 bedrooms, a shared kitchen, living room, and a dining area.

There is access to the shared garden at the rear of the property from the lounge.





The property also offers street and in-yard parking space for vehicles at the front of the property.

Team members from Auckland Care provide support to residents at Estridge Close against multi-disciplinary constructed support plans and risk assessments for vulnerable adults with Learning disabilities and/ or mental health associated needs.

The property landlord is Encircle who manage and maintain the property. Encircle take full property maintenance responsibility which includes cleaning and maintenance of the communal areas and the garden.





SUPPORTED LIVING DOMICILIARY CARE RESPITE CARE RESIDENTIAL CARE

We offer our Service Users Specialist Support and Care that they chose to receive in their own homes, Auckland Care Homes or any other place of residency or day activity that they may desire to be in.

Auckland Care is a provider with a proven track record of offering a high standard of specialized support and care for individuals diagnosed with various forms of learning difficulties and mental health needs.

The company was started in 2001 and is still owned and operated by qualified Mental Health and Learning Disabilities Practitioners.

Our main commitment is to enable service users to achieve their full potential whilst maximizing and promoting independence and community integration within a well calculated and agreed positive risk framework.

The agreed aims are met by ensuring that all of the care delivered is planned using a person centred and strength based approach, whilst valuing individual choice, beliefs and aspirations.

At Auckland Care, we measure the effectiveness of our support interventions by focusing on how far we advance towards meeting set outcomes for individual service users.

Our service users are fully involved in the planning and delivery of all care provided and they play a major role in the running and organization of their service packages.

We ensure that people's needs are met by continuously consulting with the service user's circle of support including, families, friends, advocates, care managers and health care teams.

Auckland Care caters for a wide and varied client base. The extensive specialist experience of the providers at Auckland Care allows the team to meet a wide spectrum of complex needs.

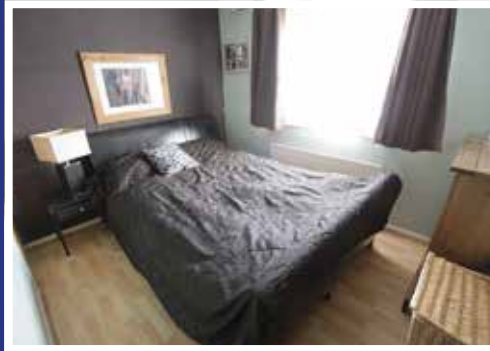
These include the needs of service users who may exhibit behaviours that may challenge the service and those who may have dual diagnosis. Auckland Care can provide support for that special client who may exhibit behaviours that may challenge services but retains the capacity to enjoy a positive and fulfilling community life.

This care is planned and provided in close liaison with the local GP, community learning disability and psychiatric teams.

The key senior members at Auckland Care Ltd bring in a wealth of experience in the Mental Health and Learning Disabilities services covering the following areas: acute admissions care, forensic care, rehabilitation care, community care, residential care, supported living, finance management and real estate, all drawn from both hospital and community settings.

This sector-experience is backed by high academic and professional training qualifications amongst the team members (Trained nurses, Biologist, Care Management, Chartered Accountant, Hons Degrees, Masters, HE Diplomas in Special needs care sciences).





Auckland Care Limited Head Office,
Unit E3, Fareham Heights, Standard Way,
Fareham PO16 8XT

Telephone: 023 8017 6805 or
023 8086 0917

Email: enquiries@aucklandcare.co.uk
Web: www.aucklandcareltd.co.uk

